



**HEALTH & CARE  
FOUNDATION**  
HOSPITAL



## ANNUAL ACTIVITY REPORT **2022-23**

Indukaka Ipcowala Seva Sansthan  
Jivraj Park, Ahmedabad

# EDITORIAL

Dear Friends & Well Wishers

Greetings!!

We are very much pleased to inform that day by day HCF is expanding its services with more enthusiasm and energy. Slowly but steadily, we have been able to go on adding new facilities to serve more number of people in their needs in healthcare.

During the last year esteemed donors came forward to support us in different projects including outreach camps.

To cater to more people, we have started engaging Full Time Doctors, initially with Ophthalmology Orthopaedic & ENT. Most likely in coming years we will be able to engage more full-time doctors in other units also.

As soon as Covid-19 situation phased out, like earlier years, last year we were happy to host 2 teams of overseas doctors, from UK & USA and organised consecutive 2 charity missions for corrective surgeries of scoliosis and upper & lower limb deformities.

Our special program “SAMIPYA” organised by us to interact with our valued donors and doctors was very much successful with overwhelming presence and support.

In the meantime, we have started focusing to enhance the soft skill of our staff members by organising periodical clinical and management training programs, which will definitely help us in our service level.

Post corona, we have increased the scope and area of outreach camps to reach out to more people.

Our continues journey with newer avenues for all these years could happen only due to support from all concerned – and hence we wish to express our highest gratitude for our esteemed Doctors, Donors, Well-wishers, Trustees, Committee Members, YUVA Team Members, Volunteers, staff members as well as AUDA, AMC, GOG who are with us always in our needs for the betterment of the society.

We believe that we will continue to receive support from all of you in future also to make happen our commitment to serve the society.

**Dr. Kalpan Desai**  
Trustee & Hon. Secretary

**Dr. Bharat Bhagat**  
Founder & Chairman

**Dr. Prakash Bhatt**  
Trustee & CEO



**HEALTH & CARE  
FOUNDATION**

HOSPITAL

## **MISSION**

**To provide specialized health care services to the needy, with focus on the underprivileged.**

## **VISION**

**Providing quality health care services through expert medicos either free or at affordable cost.**





## SAMIPYA PROGRAM

9th January, 2023

Chief Guest:

**Shri Pankajbhai Patel**  
(Chairman - Zydus Life Science Ltd)

Special Guest:

**Shri Punitbhai Lalbhai**  
(Vice-Chairman & Executive Director  
- Arvind Mills Ltd)



## CHARITY MISSION FOR SCOLIOSIS CORRECTIVE SURGERY

30th October -  
5th November 2022



## CHARITY MISSION FOR UPPER & LOWER LIMBS CORRECTIVE SURGERIES

2nd February -  
9th February 2023

Chief Guest:

**Shri. M. Thenarassan-IAS**  
(Municipal Commissioner  
Ahmedabad)

# OUR HEARTFELT CONDOLENCE

## **LATE SHRI PRAVINBHAI BALUBHAI SHAH**

Founder Trustee – HCF

“He left us with hope and inspiration.”

“He was the brightest gem of the Foundation.”

“He has gone but can never be forgotten.”

“He showed by example what we can achieve through honesty, integrity, dedication and commitment.”



You are not with us forever but will always remain in our memory as a reminder of the bright rituals you gave... You were the aroma of virtues, you were the fragrance of dedication, your shadow was the same, and your deeds were like your image, the heart is filled with the memory of your virtues and the eyes are full with tears.

You have always tried your best to help others by being happy and so be a light for us with the same virtues. Following your virtues, principles and the given sacramental heritage, we will walk the journey of life, the same to you from the bottom of our heart....

We pray almighty God to bestow upon eternal peace to the departed soul.

Health and Care Foundation Parivar.



## CHARITY MISSION FOR SPINE (SCOLIOSIS) CORRECTIVE SURGERY

30th October to 5th November, 2022

Supported by:

- Spinal Care Foundation-UK
- Spine Experts From UK & INDIA
- M/s Medtronic UK & INDIA

Every year, Spine surgeons from United Kingdom visit and perform complex scoliosis operations at Health and Care Foundation. Such operation usually lasts for 6 to 8 hours and is very expensive. Dr. Shaishav Bhagat from Spine Care Foundation U. K. brings donations and also brings very expensive implants from Medtronic's Company. A total of 9 operations were performed in this 2022 mission, all operations were successful and all patients have recovered fully. All the operations were done free of cost. The Surgeries were performed by Dr. Amit Jhala, Dr. Shaishav Bhagat, Dr. Am Rai, and Dr. J. P. Modi.

## SAMIPYA

9th January, 2023

A small seed planted in 1987, today has become a banyan tree and is doing a wonderful work for human kind in the field of healthcare services. Polio Foundation had gone far beyond limited functions and developed countless activities under the banner of Health and Care Foundation. Our organization works with a commitment to do something new every year. The journey of development of this foundation works with the sole objective of helping the unfortunate people to get rid of their sufferings.

This development has been possible because the institute has the support of honorary doctors, generous donors, volunteers, GOG & AMC. Health and Care Foundation is an example of how much social work can be done if all these people work together. It was decided that all connected people should meet and interact for further development of the organization and accordingly SAMIPYA PROGRAM was organized.



The evening of 9th January, 2023 became a rare event when the hall of Ahmedabad Management Association was full with donors, doctors and well-wishers. Watching the organization's activities through audio-visual medium everyone was highly impressed. Shri Pankajbhai Patel (Chairman of Zydus Life Science Ltd) as Chief Guest and Shri Punitbhai Lalbhai (Executive Director of Arvind Mills Ltd) as Special Guest spoke highly about achievements of the foundation. All were also impressed with the preparation of the new leaders for future of Foundation.





## CHARITY MISSION 2023

For Corrective Surgeries of Upper & lower Limb Birth Deformities

Sponsored by:

- Raajratna Foundation.
- Surgeons from Cincinnati Children's Hospital Medical Center, USA.



A mega charity mission was organized at Health and care Foundation between 2nd February to 9th February, 2023, for Upper & Lower limb corrective surgeries, sponsored by RAAJRATNA FOUNDATION & Supported by Surgeons and anesthetists from Cincinnati Children Hospital Medical Center- USA, led by, Dr. Shital Parikh – Pediatric orthopedic surgeon (Co-Director Orthopedic Sports Center, Division of Pediatric Orthopedic & Associate Professor – Cincinnati Children Hospital, USA). Total 193 patients were screened, referred by Apang Manav Mandal, Sadhvichar Parivar Trust, Bhansali Trust Hospital and other organizations. We also advertised in different media supported by M/s PSP projects and Ambabhen Maganbhai Patel Public Charitable Trust. Total 48 corrective surgeries were successfully performed at totally free of cost. All patients and their families were highly happy with the care provided by staff of HCF.



# NATIONAL HEALTH MISSION

## DISTRICT EARLY INTERVENTION CENTER

Recognized by Government of Gujarat

For diagnosis and treatment of children with deformities, deficiencies, disease and developmental disorders between the age of 0 to 18.



Developmental Dysplasia of the Hip Pre - Post

We have 35 Years of experience in the field of congenital birth defects. Considering the expertise, the Government of Gujarat has given approval to the hospital as DISTRICT EARLY INTERVENTION CENTER; under this banner, the hospital has been rendering complete diagnosis, treatment and / or surgery for 28 types of congenital birth defect totally free of cost to the patients up to 18 years of age.

### DEFECTS AT BIRTH

- Neural Tube Defect
- Down's Syndrome
- Cleft Lip & Palate/Cleft Palate Alone
- Clubfoot
- Developmental Dysplasia of the Hip
- Congenital Cataract
- Congenital Deafness
- Congenital Heart Diseases
- Retinopathy of Prematurity

### CHILDHOOD DISEASES

- Skin condition (Scabies, Fungal Infection and Eczema)
- Otitis Media
- Rheumatic Heart Disease
- Reactive Airway Disease
- Dental Caries
- Convulsive Disorders

### DEFICIENCIES

- Anemia especially Severe Anemia
- Vitamin A Deficiency (Bitot Spot)
- Vitamin D Deficiency (Rickets)
- Severe Acute Malnutrition
- Goiter

### DEVELOPMENTAL DELAYS AND DISABILITIES

- Vision Impairment
- Hearing Impairment
- Neuro-Motor Impairment
- Motor Delay
- Cognitive Delay
- Language Delay
- Behavior Disorder (Autism)
- Learning Disorder
- Attention Deficit Hyperactivity Disorder
- Congenital Hypothyroidism, Sickle Cell Anaemia



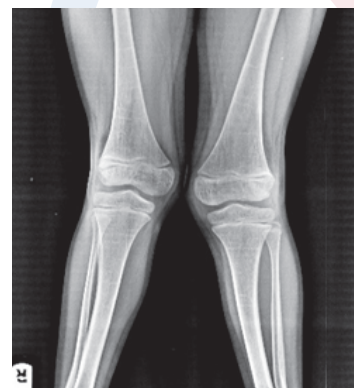
## SHANTABEN KANTIBHAI PATEL (PATDIWALA) PEDIATRIC ORTHOPEDIC UNIT

Supported by:

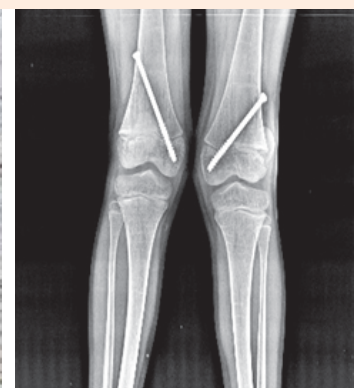
• RMMMRT - Mumbai • Jewelex India Pvt Ltd.

Children having congenital birth defects suffer tremendous problems in their daily lives. Society is also not that much kind towards such children and does not support them as per their needs. To make them happy, and to lead respectable lives, under this unit these children are diagnosed and operated by expert Pediatric Orthopedic Surgeons. The hospital has all facilities, like modern Operation Theatre with IITV and other latest equipment to perform such surgeries. Post- surgery, the beneficiary is provided with calipers and/or Artificial Limbs as per requirements

PEDIATRIC ORTHOPEDIC UNIT	
New Beneficiaries	426
Follow-up Beneficiaries	1534
Total Beneficiaries	1960
Corrective Surgeries Done	257



Before



After

## SUSHILABEN MANUBHAI PARIKH CLUBFOOT CLINIC

Clubfoot is a congenital condition that causes a baby's foot to turn inward or downward. It can be mild or severe and can occur in one or both feet. In babies who have clubfoot, the tendons that connect their leg muscles to their heel are too short. These tight tendons cause the foot to twist out of shape. At HCF, club foot deformities are successfully corrected with non-surgical Ponseti method followed by splints and physiotherapy. After casting period, few numbers of babies require Tenotomy surgery to release tightness in the Achilles tendon.

CLUBFOOT	
New Beneficiaries	23
Follow-up Beneficiaries	49
Total SC	72
Ponseti	58
Tenotomy	17



Pre-Treatment



Post-Treatment

# HEART FOUNDATION & RESEARCH INSTITUTE DR. NITIN SUMANT SHAH

## SPINAL (SCOLIOSIS) CORRECTIVE SURGERY UNIT

Supported by : RMMMRT - Mumbai



Pre - Operative



Post - Operative

Spine is one of the most useful and important body parts of human. If any damage in spine, then various other important body parts are also affected and the person cannot lead a normal life.

The Spine Clinic at Health & Care Foundation Hospital taking care of such children suffering from congenital spinal problems by diagnosis, treatment and corrective surgery by expert spine surgeons supported by modern equipment and facilities. Such type of surgeries are very critical and time consuming as well as very expensive. In our trust hospital, such surgeries are done either free of cost or at a very nominal cost.

Every year, team of Spinal Experts comes from UK to perform spinal surgeries to support us.

### SCOLIOSIS DATA

New Beneficiaries	66
Follow-up Beneficiaries	72
Total beneficiaries	138
Total Surgery Done	46

## TOTAL KNEE REPLACEMENT SURGERY

Supported by : RMMMRT, Mumbai

Total Knee Replacement Surgery performed at Health and Care Foundation for people who don't have PMJAY card or Mediclaim and have financial constraint; we are trying to help them by providing surgery at very affordable low cost. So that they can live respectful lives in society.

Swiss made Implant or implant of J&J brand are provided by **Radha Mohan Mehrotra Medical Relief Trust (RMMMRT)** of Mumbai at free of cost.

Old Patients (2022)	16
New Patients (2023)	09
Total Surgery Done	25

## CLEFT LIP & PALATE CORRECTIVE SURGERIES

Supported by : Kamla Foundation, UK

### CLEFT LIP



Before



After

### CLEFT PALATE



Before



After

Cleft lip and palate are one of the most common birth defects, openings or splits in the upper lip, the roof of the mouth (palate) or both. Cleft lips mostly seen in boys, while cleft palate is seen in girls and occurs about 1 or 2 per 1000 births in the world. Cleft lip and palate is usually surgically repaired in Heath and Care Foundation hospital totally free of cost under expert plastic surgeon team by modern techniques. Surgery can significantly improve child's appearance, quality of life, and ability to eat, breath and talk.

#### CLEFT LIP & CLEFT PALATE DATA

New Beneficiaries	35
Follow-up Beneficiaries	17
Total beneficiaries	52
Total Surgery Done	45



## CEREBRAL PALSY CENTER

### JIVRAJ PARK UNIT

Supported by : Shah Chimanlal Chhotalal  
Lokhandwala Charitable Trust  
Day Care Center Supported by :  
Smt. Shantaben Jayantilal Choksi,  
C/o. Shri J. J. Choksi  
Supported by : Invensia Healthcare

### NIKOL UNIT

Supported by : Late Dr. J C Shah &  
Ahmedabad Municipal Corporation  
Sponsored by : Ahmedabad Mercantile  
Co-operative Bank Limited

Cerebral palsy is a developmental disability caused by brain damage before, during or after birth. It is a term for a group of condition in which brain damage affects ability to move or control muscles. Each child with CP is affected differently depending with the level of damage. It is found in 3 out of every 1000 children worldwide. Our foundation has been running unit for cerebral palsy children, who are usually neglected by community. Under this unit, we have been providing a variety of therapies which help to maximize their abilities and physical strength, prevent complications, and improve their quality of life and expert doctors perform regular diagnosis of the children to ensure their assessments and proper rehabilitation.



	Jivraj Park	Nikol
Physiotherapy	8114	4663
Occupational Therapy	6173	3015
Sensory investigations	3135	1497
Home bound program	30	-
Day care unit	1943	-
ADL	1998	1419
Play therapy	2514	1351
Speech therapy	162	-
Developmental pediatrician	28	-
Psychological assessment	16	-
Special Education	6838	1296

	New	Old
General Pediatrician	74	19
Pediatric Neurology	61	333
Developmental Delay	7	24
Surgery (With Botox Injection)	3	
Registered Children – Jivraj Park Center	128	
Registered Children – Nikol Center	32	

## SHREE GUJARAT VAISHYA SABHA VOCATIONAL TRAINING CENTER



Vocational training focuses on developing technical skills for a specific job or trade. It offers you practical knowledge in contrast to theoretical knowledge offered by the conventional formal education system. Understanding different vocational training options can help you choose the right one for one's career growth and development. The trust has started a vocational training center at Jivraj Park. In this center, the children are engaged in preparing different articles, e.g., foot mat, paper gift bags, Rakhis, earthen diyas etc. which are used by different individuals as well as corporates.

VOCATIONAL TRAINING CENTER		
Diya	Paper Bags	Rakhi
15247	4889	983

## LATE. SHARMISHTHABEN MANUBHAI SHAH (BADARPURWALA) AUTISM UNIT

AUTISM	
New Beneficiaries	359
Follow-up Beneficiaries	112
Total beneficiaries	471



Autism is one kind of mental disease found in children. Usually, it is found in 2 children per 1000 live births. The children become hyper-active due to this. The trust has been running successfully a separate unit for such children since last 8 years. In this unit specially trained teachers provide various therapies to such children to make them cured. With help of such scientific therapies and treatment, such children become physically and mentally improved to live a normal life. The parents of such children are also counseled from time to time for better results.

## PRAVINBHAI BALUBHAI SHAH CHARITY TRUST

### OPHTHALMIC DEPARTMENT



As India has the highest number of blind populations in the world, the importance of this unit is immense. We have all facilities under one roof for prevention of blindness by investigations, treatment and advanced surgery for all age group of patients. With help of modern equipment, diagnosis of eye disorder is done in our hospital. Under this unit, General eye check-ups, vision test, tests for cataract, squint etc. are done in the OPD by expert consultants.

Modern Operation Theatre, surgeries for Pediatric as well as adult cataract and other ophthalmic surgeries are performed at very affordable cost.

Under this department we have units for

- Adult & Pediatric Cataract Surgery
- Cornea Grafting
- Glaucoma
- Retinal Problems
- Orbit and Oculoplasty Surgery

	New Beneficiaries	Follow-up Beneficiaries	Surgery – Procedure
Adult Cataract	3254	4133	570
Cornea Grafting	29	139	9
Glaucoma	58	147	52
Retinal Problems	340	1016	645
Orbit and Oculoplasty	41	151	33

## RAMANGOURI AND HIRALAL SHAH INVESTIGATIVE DIABETIC RETINOPATHY CLINIC

Due to diabetes and high sugar, patients may suffer from retinal problems. If not taken seriously and treated on time, loss of vision may follow. In our trust hospital, such patients are diagnosed and investigated by FFA, OCT Machines.

New Beneficiaries	340
Follow-up Beneficiaries	1016
Total beneficiaries	1356
Laser Therapy	136
Intraocular injection	152





## SCREENING OF DIABETIC RETINOPATHY AT OUTREACH CAMPS

Supported by : Smt. Smitaben and Shri Kiritbhai Shah (USA)

Health & Care Foundation on regular basis organize outreach camps in community places for screening of diabetes as well as eye problems. After screening of eyes at such camps, we provide complete investigations to the positive patients and give them laser therapy or intraocular injections.



## RETINOPATHY OF PREMATUREITY

Supported by : Parampujya Acharya Shree Kalyansagar Surishwarjee Maharaj Saheb  
Amola Surendrabhai Mangaldas Kachrabhai Parivar (Tintodavala)

In India, with advance in neonatal care units, a large number of low-birth-weight premature babies are now living with risk of developing retinopathy of prematurity (ROP). The low-birth-weight babies are more likely to develop ROP. This disorder which usually develops in both eyes & one of the most

common causes of visual loss in childhood and can lead to lifelong vision impairment and blindness. Our hospital runs the telemedicine project since more than twelve years supported by NHM, Government of Gujarat. Our mission is to screen pre-mature babies by RETCAM, diagnose and provide necessary treatment to save babies eye sight.



New Babies	4109
Follow-up babies	1975
Total babies screened	6084
Eyes treated	254

## PEDIATRIC OPHTHALMOLOGY UNIT

Supported by : Sheth Harilal Harivallabhdas Trust



Before



After

At the time of birth, some babies suffer with problems of cataract, cross-eyed etc. which become complex for them. If timely steps are not taken and treatments are not done, the problems may affect the vision of the child and may lead to blindness. In this unit, children come for diagnosis. By providing timely investigations and treatment and if required surgeries, such children are cured of the problems. Surgeries are performed either free of cost or at highly affordable cost.

New Beneficiaries	113
Follow-up Beneficiaries	227
Total beneficiaries	340
Cataract Surgery done	45
Squint Surgery done	3

## CENTER FOR DIABETES AWARENESS AND DETECTION

Supported by : Lalji Mehrotra Foundation, Mumbai

India has the highest number of diabetes patients in the world – irony is that Gujarat's diabetes ratio is also high in All India average. CENTER FOR DIABETES run by our trust, organize outreach screening camps in community places for detection of diabetes. After primary screening, if found positive, patients are advised to come to our hospital for all secondary investigations which are done totally free of cost. We organize awareness seminars & talk-shows for prevention of diabetes. We also run a Diabetes club to help the patients continuously on long term basis under Diabetics membership card.

New Beneficiaries	1,116
Follow-up Beneficiaries	5,151
Total beneficiaries	6,267
Further investigations	1,046

Facilities for Diabetic club members:

Secondary investigations just INR 100/-	Tertiary care Treatment Just INR 500/-
FBS / PPBS 6 times in a year	Heart 2D Echo
Physician Reference 4 times in a year	Kidney Electrolytes (NA+, K+, Cl)
Eye Fundus Check-up 2 times in a year	Kidney Sonography of Kidney
ECG 2 times in a year	Eye FFA or Fundus photos + OCT
Serum Creatinine – 1 time in a year	Foot Podia scan and Thesiowin

## MADHURAM DIABETIC FOOT CLINIC

Our diabetic foot clinic provides all facilities by modern computerized Foot equipment and specialized consultants. Regular follow up can save the complications of diabetic foot. Beside this, in our modern workshop, we prepare diabetic footwear and foot insoles at a very affordable cost.

Total Patients Screened	563
Foot Test	325

## SOPHOS JUVENILE DIABETES CENTER

Type-1 diabetes is fatal unless treated with proper care and insulin. we have been treating such kids by most common method of administering insulin. We provide them insulin at subsidized cost supported by Esteemed Donors and Juvenile Diabetes Parents Foundation has been supporting continuously.

OPD	
New Beneficiaries	31
Follow-up Beneficiaries	840
Total beneficiaries who benefited subsidized rate insulin	871

## DIALYSIS UNIT

UNIT - 1	UNIT - 2 & 3
<b>LATE LALIT SHAH DIALYSIS UNIT</b> Supported By : <b>Late Sudhirbhai Sarabhai Choksi Family &amp; Pravinbhai Balubhai Charity Trust</b>	<b>PRAVINBHAI BALUBHAI CHARITY TRUST</b>

We have been providing dialysis procedures to needy people by modern equipment, under experienced dialysis technicians and expert doctors at free of cost for PMJAY card holders and at nominal costs for others.

Total no of Procedures	6849
------------------------	------





## SMT. KALABEN ARVINDBHAI NANAVATI WOMEN WELLNESS CLINIC

Supported by : Late Dhanlakshmiben Manilal Ranchhoddas

Breast cancer is the most common cancer in women and the second most common cancer to cause death in women.

We run WOMEN WELLNESS CLINIC to spread awareness and early diagnosis for breast & cervical cancer. We are providing package of breast mammography, breast sonography, and abdomen sonography, Pap smear test, gynecologist and onco-surgeon consultation for early screening of breast and cervical cancer at very nominal cost. If breast cancer is detected in any woman, surgery is performed in our hospital by Expert Surgeons at highly affordable cost.

### I-BREAST EXAMINATION

Supported by : Shilp Gravures Ltd.

Device Supported by : U & U LTD – UK & Amanta Healthcare Ltd.

A New Way To Detect Breast Cancer

Nowadays, Cancer has become a dreaded disease all over world. In women Breast cancer & cervical cancer are day by day increasing globally. To fight this, regular awareness programs, diagnosis as well as timely treatment at H&CF.

The women undergoing such screening become stress -free. I-Breast Exam is a US FDA approved, first of its kind device that enables health workers to identify non-palpable breast lumps in just a few minutes, without pain or radiation.

HCF regularly conducts Outreach Breast Screening Camps for awareness and early detection of Breast Cancer camps by I-Breast Exam device in and around Ahmedabad city. Those who need additional investigation, we counsel them to attend hospital for tests like Mammography and Sonography of Breast



Total Camps	104
Total Woman Screened	3014
Total Woman who need further Treatment Given	42

## UNISON PHARMACEUTICALS PVT LTD. ENT UNIT

Supported by : RMMMRT - Mumbai



In Today's modern era people are suffering from ear, nose and throat problems. People have been facing ear disorder, such as ear infection, hearing impairment, diseases that affect balance (vertigo), tinnitus (ringing in the ears), or pain in the ear create problem of deafness, nose issues namely sinusitis, and nasal cavity which can affect breathing, cause loss of smell, as well as affect cosmetic appearance. The throat disorders can disrupt speech, eating, digestion, swallowing, and singing. ENT specialists can identify, manage, and treat such problems. Few years back we have started ENT unit; Surgeries are performed by expert surgeon at highly subsidized cost.



Our hospital has been providing several hearing tests, like OEA, BERA, ASSR etc. with modern equipment at either free of cost or at highly affordable cost.

New Beneficiaries	841
Follow-up Beneficiaries	1012
Total Beneficiaries	1853
Procedures – Surgery	145
Investigations:	
OAE	84
ASSR	36
BERA	55
MAPPING	40

## DENTAL UNIT

Supported by : Smt. Chandravatiben Chimanlal Shah - Shri C. C. Shah (Baushir M. Marfatia and Co.)  
From His Family • Shri Parshwanath Cahritable Trust • Shri Mahavir Trust • Smt. Amlaben and Shri  
Rajeshbhai C. Shah • Prabhavatiben Hirabhai Bhagwati • Jewalex India Pvt Ltd.



Teeth are the ornament of face. Due to various reasons dental problems are increasing in all age group of people. Further dental treatments are becoming very expensive nowadays. Looking at all these, the trust has started its dental unit and it has been running very successfully. As a matter of fact, the trust has been forced to expand the unit due to heavy rush of patients.

New Beneficiaries	1975
Follow-up Beneficiaries	7770
Total Beneficiaries	9745
Procedure Done	5530

## PROJECT - RIGHT TO LIVE FOR MALNOURISHED CHILDREN & CHILD MAL-NUTRITION TREATMENT CENTER (CMTC)

**A Joint Effort of Health & Care Foundation and Ahmedabad Municipal Corporation • Anganwadi Out Reach Food Distributions**

Supported by : Srimati Manjulaben Jayantilal Soni • RMMMRT - Mumbai  
• Jewalex India Pvt Ltd.

A child suffers from malnutrition if appropriate quantity or quality of food nutrients comprising a healthy diet is not consumed, or not absorbed adequately or not metabolized for an extended period of time.

Under this center the following services are provided :

- A unit for Management of highly malnourished children by expert doctors and trained staff
- Providing high nourished balanced food having rich protein and vitamin for mother and the child.
- Co-ordination and follow ups through Anganwadi workers.
- CMTC center is an exclusive 6 bed ward at HCF.



Total Malnourished children treated at H&CF	118
---	-----



## VACCINATION CENTER

Supported by : Smt. Smitaben & Shri Kiritbhai Shah USA &  
Pravinbhai Balubhai Charity Trust Vaccination Center  
Supported by: Ahmedabad Municipal Corporation



Childhood vaccines are one of the great victories of modern medicine. Indeed, parents whose children are vaccinated no longer have to worry about their child's death or disability from whooping cough, polio, diphtheria, hepatitis or a host of other infections."

The Vaccination Center of Health and care Foundation, Ahmedabad is providing vaccinations and plays a vital role to improve the health status of community. This center serves indoor and outdoor neonates & children by providing life- saving vaccines free of cost which is provided by AMC; other type of vaccines for children and women are provided at subsidized cost or free of cost to underprivileged people.

VACCINES PROVIDED BY HCF AT HOSPITAL					
Pentavac	Chickenpox	OPV	Hepatitis B	DPT	Measles
HPV (cervical cancer)	Hepatitis A	Thyroid	Rotavirus	Pneumococcal	Rubell

Beneficiaries for Vaccination	664
-------------------------------	-----

## CREST DATA SYSTEMS PVT. LTD. REACH PROGRAM

RAISE EARLY AWARENESS FOR COMMUNITY HEALTH  
OUTREACH SCREENING CAMPS FOR DIABETES, BREAST CANCER,  
CERVICAL CANCER



CREST DATA SYSTEMS PVT LTD	
Total Breast cancer screening	3091
Total Cervical cancer screening	831
Total Diabetes screening	7015



## AMANTA HEALTHCARE LTD. REACH PROGRAM

RAISE EARLY AWARENESS FOR COMMUNITY HEALTH  
OUTREACH SCREENING CAMP FOR DIABETES, BREAST CANCER,  
CERVICAL CANCER & OTHER DISEASES



### AMANTA HEALTHCARE LTD

Total Breast cancer screening	99
Total Cervical cancer screening	54
Total Diabetes screening	339



## PROJECT FOR LOW VISION CHECK-UP FOR SCHOOL GOING CHILDREN

Supported by : Ahmedabad Municipal Corporation

• Gujarat Chambers of Commerce and Industry • Lions Club of Ahmedabad - Main • R Kumar Optical



This year we have started a new Mission for school going children to check their eyes and find abnormalities and treat them. So far we have screened 11000 + students of 22 Schools. Total 719 student were found to have refractive errors, who were provided spectacles at free of cost. Some children found suffering other ophthalmic problems have been treated in our hospital. This initiative will help the students in their education and individual growth. Visual impairment is an avoidable burden in the life of a child, their family and the society.

No. of Schools Visited	22 schools
Total Students Screening Year 2022 – March 2023	11000+
Total Spectacles Given to Students	719
Total Screening for Squint Done	18
Total Surgery Done	02

## SHRIMATI KALABEN ARVINDBHAI NANAVATI MULTI-SPECIALTY DIAGNOSTIC CLINIC

Understanding the high cost of Specialist services, we run Multispecialty Diagnostic Clinic. Under this clinic, we offer services like Gastroenterology, Pulmonology, Upper Extremity Orthopedic, Nephrology, General Surgery, Pediatric General Surgery, Sonography, Cancer Pain and Palliative Medicine & Dermatology which provide diagnostic facilities at highly subsidized rate.

### GASTROENTEROLOGY

Gastroenterology is a medical specialty dealing with the Human digestive system disorders. At HCF, Gastroenterologist examines the patients, diagnose their disease and provide medical treatment at subsidized cost.

### PULMONOLOGY

Nowadays global warming has been increasing day by day and people are facing the lungs and respiratory system problems. At HCF, pulmonologist diagnoses patients and manage more complex illnesses. We provide Chest X-ray, PFT, and lab test at concessional rate.

### NEPHROLOGY

Kidney damage may be caused by diabetes, high blood pressure, and various other chronic (long-term) conditions.

We provide consultation, renal function test and ultra-sonography at highly subsidized cost. In addition, we run Dialysis unit for chronic renal failure patients.

## PAIN MANAGEMENT CLINIC

Due to ageing process, pain starts at various body joints. Further to this, pain may start after suffering cancer, post-surgery. Body parts especially waist, spine are prone to pain. The trust hospital has a dedicated clinic for such patients, wherein expert doctors relieve the pains by way of medication and different procedures, therapies – sometime by injection, ozone therapy, Radio Frequency therapy after investigations helped by X-Ray etc.

### PEDIATRIC GENERAL SURGERY

At Health and Care Foundation, a Pediatric General Surgeon evaluates abdominal problems and provides medical treatment.

### UPPER EXTREMITY ORTHOPEDIC

Upper extremity problems that affect the shoulder and elbow are very common. Patients can develop such problems as a result of traumatic injuries, sports activities, work injuries and occupational disorders, and degenerative conditions.

### DERMATOLOGY

Layer of skins maintains overall hydration and serves as our primary defense against the environment, so keeping it strong and healthy is important. We provide consultation and nitrous oxide application at most affordable cost.

New Patients	570
Follow-up Patients	676
Procedure	69

## **SMT. SMITABEN AND SHRI KIRITBHAI SHAH PEDIATRIC DIAGNOSTIC UNIT**

If a baby suffers from any disease, his/her development will be affected. Further if the baby has congenital birth defect, defect will increase as per age and if proper treatment is not provided, the child will suffer for entire life. As such timely diagnosis and treatment are necessary to make the child happy in his/her future life.

MEDICINE PEDIATRIC DIAGNOSTIC	
New Beneficiaries	616
Follow-up beneficiaries	1039
Total beneficiaries	1655



## **LATE SHRIMATI KANCHANGAURI JAMNADAS SHAH HEALTH CHECKUP CENTER**

Timely and routine health check- ups prevent lot of diseases. Healthy citizens are assets of the country. As such, we have been providing health check-up facilities in our hospital at highly affordable cost. The Center has been engaged in catering to a large number of beneficiaries each day.

Total No of Beneficiaries	2665
---------------------------	------

## **MAHALAXMI MATA TRUST (PALDI) GENERIC MEDICINE CENTER**

We have been running a generic medicine store where we provide prescribed drugs, high quality generic medicines. HCF helps needy peoples by proving them access to genuine generic medicines at discounted prices.

Total Beneficiaries	18718
---------------------	-------



## RADIOLOGY UNIT

With help of modern technology, in the Radiology Unit, X-Rays are done for chest, waist, hands and legs by digital x-ray machine. Additionally, we do 2D Echo, sonography of breast and abdomen in this unit. Mammography is also done for detecting breast cancer. All these investigations are done by Experts at highly affordable cost to help the needy patients.

Xray	6460
Sonography	1606
Mammography	238
2D Echo	209



## CREST DATA SYSTEMS PVT LTD PATHOLOGY UNIT

Supported by :  
Sulochna C. Dalal • RMMMRT- Mumbai

Our pathology laboratory is always focusing on quality testing, and timely reports to provide early treatments. In it we have HEMATOLOGY, BIO-CHEMISTRY AND MICROBIOLOGY, Department working together. All types of blood and urine Investigation --- more than 200 types of tests - are done here with modern automation equipment using quality reagents at highly nominal cost.



Total beneficiaries	15774
---------------------	-------

## PROSTHESIS AND ORTHOSIS UNIT

The prosthesis involves use of artificial limbs (prosthesis) to enhance the function and lifestyles of persons with limb loss. Orthotics involves precision and creativity of design and fabrication of external braces (orthotics) as part of patient's treatment process.

We have been preparing different types of splints, high tech limbs, calipers, spinal braces, Diabetic ware, and insole for diabetes patients and artificial limbs for needy peoples at nominal cost or at highly subsidized rate.

Calipers	265
High Tech	02
Jaipur-al	02
Diabetic Insole	00

## LATE SADGUNABEN RATILAL ZAVERI MUSCULAR DYSTROPHY UNIT

A group of genetic diseases that cause progressive weakness and loss of muscle mass. In muscular dystrophies, abnormal genes (mutations) lead to muscle degeneration. Most forms begin in childhood. Damaged muscles become progressively weaker. Most people who have the condition eventually need a wheelchair. Other symptoms include trouble breathing or swallowing. Medication, therapy, breathing aids or surgery may help maintain function, but life span is often shortened.

With support from Indian Muscular Dystrophy Society & Research Center, the OPD for diagnosis and treatment of this dreaded and incurable disease has been running at HCF Trust hospital. We have been trying our best to give relief to these unfortunate patients with support from IMDS. Medicines are also provided to the patients under this project.

Beneficiaries Registered	123
--------------------------	-----

## UGARCHAND PATEL GENERAL PHYSIOTHERAPY UNIT

Supported by :

- Naranbhai Aatmaram Patel (Paras Pharma)
- Khodabhai Patel – Paras Parivar

Our physiotherapy unit is committed to providing the highest level of patient-centered care. We provide advanced assessments and therapies to address neuro-musculoskeletal injury and dysfunction. We provide rehabilitation solutions utilizing an individualized, single or multi-disciplinary approach, to make able to do maximum function at work, play or activities of daily life



New Beneficiaries	753
Follow-up Beneficiaries	578
Therapy given till Now	19191

## RATIBHAI G PATEL SENIOR CITIZEN CENTER

Senior citizen center provides an opportunity for seniors to get active, enjoy various social activities, and to improve their overall quality of life.

Our motto is to provide a holistic service to ensure physical, mental and social wellbeing of senior

Citizen. At HCF, we provide facilities such as entertainment, yoga, once a month blood sugar checkup, every week blood pressure measurement, indoor games, and library.



Total Registered Senior Citizen	30
---------------------------------	----







# ESTEEMED VISITOR'S COMMENTS

Shri M Thennarasaran  
IAS - Municipal Commissioner - AMC

Mr. Alex Koch  
Germany

DATE	NAME & ADDRESS	PHONES	COMMENTS & SUGGESTIONS
19/01/2022	Shri. M. Thennarasaran, IAS, Municipal Commissioner, AMC	9449111111	1. The expansion of the city is a very important issue. It is a good idea to have a city-based NDD since 1998. It is a good idea to have a city-based NDD since 1998. It is a good idea to have a city-based NDD since 1998.

DATE	NAME & ADDRESS	PHONES	COMMENTS & SUGGESTIONS
19/01/2022	Mr. Alex Koch, Germany	9449111111	1. The expansion of the city is a very important issue. It is a good idea to have a city-based NDD since 1998. It is a good idea to have a city-based NDD since 1998. It is a good idea to have a city-based NDD since 1998.

## NEWS PUBLICATION:



## STORIES OF PATIENTS & THEIR FEEDBACK

મહાત્મા હાસિવસિંગના લાભીરિખના)

મારા બાળક હાસિવસિંગનો જન્મ જાન્યુઆરી ૨૦૧૩માં જાને થયેલો છે. જન્મ લખાને જાને થયેલો નામ સંભળે, દાદા-દાદી દરેકના આગ્રહનો પાર ન હતો. જન્મની પુરાણીમાં મોકાણની વહેંચણી કરવામાં આવી હતી જન્મ લખાને સ્પષ્ટ દેખાતા એવા મારા બાળક મોકાણ મહિના - ૮ - મહિના બાદ પણ આવીવાળા આપનો દેખાતો સ્વસ્થતાના અનુભવે એમ કે મહા-આર-૨ મહિનાનો સ્વસ્થ દરો ત્યાં જુદોજા પાને માલોશ કરીવડે એટલે પણ મોઢા મદ વધે, જેમ જેમ મારો દીકરો મોટો થતો ગયો તેમ-તેમ તેમ જોડપણ જુદોજા ન થતા મારી ના લાગણી માતાની મિત્રતા લખાની ગણ

દીકરો અને માતાના ત્યાં આપુલપુના ગામમાં કોલેજોને પડા બનાવડ પડા બાળકના પાળી આવીવળોના પ્રજા કોલેજો નથી, ગામના અંગ્રેજીના લોકોમાકીવેલે જડીના એક પટેલાલજીએ આપીને કડક કે મારી લાડીના બાળકને આપી ન તડીકી હતી અને તેણે આપવાવાદે પાને આપેલા જુની પોશાકો કોલેજો (આપની) કેમ એક કેર કોલેજો આપાડુ પાને આપેલા) માં આપવા કરાવેલા અન્યાર જુદો અને પટેલાલજીએ પ્રેરે દેવા કરેલા, આમને આપણે ગામના પટેલાની લાખના લાખના લોકો અને આપી જુદાઆપાકે પાને આપેલા કેમ એક કેર કોલેજોના આપવા, આપી આપવા ત્યારે મારા બાળકની ઉમર લખાની હતી

આડી કોલેજોના બાળકોના અંગ્રેજી પેકેટ કોલેજો આપવાની તપાસ કરી બાળે દવા આપુ કરી, બાળકની ઉમર ત્યાં આપેલી પરીમત્ર કરા બાદ મહિના બાદ બાળકની આપેલી કરી, આપેલી કરા બાદ કરીથી વધારે બાળકને બેઠાનીને મામે કામે પાળી બેસી વધારે અંગ્રેજી અંગ્રેજી બાળકને બેઠાનીને મામે કામે પાળી બેસી વધારે કરાવે, ૨૦ મહિનાના બાળે મારો દીકરો બેઠાના આપનો લખ ગયો એ જે અંગ્રેજી આપેલા સામે મારા દીકરાના જન્મ લખાને મોકાણની વહેંચણી કરી હતી તે જ આપેલા સામે કરીથી મોકાણની વહેંચણી કરી

5/5/23

કચંડ કેમલાલ મારા ગામ ગોરકા - બારાદ

મારો અને કચંડ ના ગોમાળ અંગ્રેજીના કરાવેલા છે અને અમને મારવાર આપી મનેલા છે અંગ્રેજીના કીમાં લખેલા છે એ લખા આ અંગ્રેજીના અને આપાર માન્ય છે

નામ:- કાલી જુદાલાલ મોલાલ  
 વસીલું નામ:- કાલી મોલાલ મોલાલ  
 ઉમર:- ૨૫ વર્ષ  
 અવાજ:- મિશન કુલ્કી (અંગ્રેજી)  
 ના કાળ, જાળો

કેવી રીતે આપેલા:- લોકો કોર  
 કોલેજો મારવાર:- લોકો એક કેર કોલેજો  
 દાખલ થયેલા મોળો:- કાલી મોલાલ  
 દર્દ/રોગ:- કાલી પા

રિપોર્ટ આપા આપેલા પ્રેરે ગામમાં - ૨૦ ૧૦૦૫  
 નિર્મિત મારવાર કોલાલી આપેલા કી - ૨૦ ૧૦૦૫  
 કોલેજો લાખ / લખાલ મારવાર - ૨૦ ૧૦૦૫  
 કાલી કાલાલ કે મુલાલ - ૨૦  
 કાલી/કોલેજોના મારવાર - આપવાલ ૧૦૦૫  
 કોલેજો મારવાર - આપવાલ ૧૦૦૫  
 અંગ્રેજી કોલેજોના કાલી આપવાલ મારવાર - આપવાલ ૧૦૦૫

\*કાલી મારવાર મારે.  
 મ.સ.કોલાલ  
 મો- ૯૨૬૩૧૬૩૧૫

BOARD OF TRUSTEES		
Dr. Bharat Bhagat	Shri Krishnakant C. Shah	Shri Nipambhai Shah
Shri Jayendrabhai Patel	Dr. Kalpan Desai	Dr. Rohitbhai Parekh
Dr. Prakash Bhatt	Shri Ambarbhai Patel	Shri Manan Godiawala
Dr. Keyur Shah	Shri Anuj Mehta	

SPECIAL INVITEES IN BOARD OF TRUSTEES		
Shri Sarvangnabhai Godiawala	Shri P K Ghosh – IAS (R)	Shri Anil G Agrawal
Shri Dhruv Shah	Dr. Kamal C. Shah	Smt. Binaben Shah
Dr. Prakash Amin		

GROUP OF MENTORS		
Shri Bhaveshbhai Patel MD – Amanta Healthcare Ltd.	Shri Jitendrabhai Chauhan CMD - Jade Blue Lifestyle India Ltd.	Shri Jayeshbhai Shah CFO – Arvind Ltd.
Shri Hemantbhai N Shah CMD – Navin Group	Shri Jayantibhai Sanghvi Jt. MD – Ratnamani Metals & Tubes Ltd.	Shri Nareshbhai Sanghvi MD – Raajratna Ventures Ltd.

ADVISORY COMMITTEE MEMBERS		
Shri Milan Dalal	Shri Rashmikant Shah	Lion Mukesh Patel
Dr. Khodabhai T. Patel	Shri Ashokbhai G. Shah	Shri Pareshbhai Talati
Shri Prafulbhai Shah	Shri Jagatbhai Kinkhabwala	Shri Shaileshbhai Dalal

INVITEES		
Dr. Maltiben M. Shah	Dr. S. R. Apte	Shri Ravindrabhai Mehta
Shri Dhruvpadbhai G. Shah	Smt. Sukeshi Shah	Shri Girishbhai Mehta
Dr. Hemant Broker	Shri Mansukhbhai Patel	Dr. Pankaj M Shah
Dr. Vipin Naik	Lion Mahendra Shah	Shri Madhukarbhai T Shah

INTERNATIONAL RESOURCE COMMITTEE		
Shri Kiritbhai Shah President	Dr. Nayanbhai Nanavati	Dr. Shaishav Bhagat
Dr. Shital Parikh	Shri Vivek Bhagat	Shri Takshak Desai

MANAGEMENT TEAM	
Dr. Pankaj Raval Medical Superintendent	Mr. A. N. Banerjee Head HR & Admin



YUVA TEAM		
Smt. Heenaben Godiawala	Shri Dhaval R. Shah	Shri Yamik Thakkar
Shri Pathik Patwari	Smt. Rupalben Shah	Shri Darsh Parikh
Shri Arpit Talati	Shri Nilesh Patel	Shri Dhrumilbhai Joshi
Shri Apoorva Thakershy	Shri Parag Shah	Smt. Deepaliben Joshi
Shri Samir Shah	Shri Ankit S. Patel	

VOLUNTEERS		
Shri Dattuprasad Dave	Smt. Reshmaben Shah	Smt. Ranjanben Kothari
Shri Sanjaybhai Shah	Smt. Sailaben Amin	Smt. Sonalben Shah
Smt. Hetal Zinzuwadia	Smt. Kalgiben shah	Smt. Sukeshi Shah
Shri Suresh Pandya	Smt. Heena Godiawala	Smt. Kalpana Doshi

## OUR TEAM OF DOCTORS

OPHTHALMOLOGY UNIT	
Dr. Anil Shah General Ophthalmologist	Dr. Beena Desai Corneal Surgeon
Dr. Alay Banker Retino Vitreous Surgeon	Dr. Sajni Kalpit Shah Ped. Ophthalmologist
Dr. Shefali Maheshwari Cataract Surgeon & Glaucoma Surgeon	Dr. Juhi Shah (Thakkar) Orbit & Occulo Plasty Surgeon
Dr. Sonal Suri Corneal Surgeon	Dr. Sejal Bhatt Retino Vitreous Surgeon

ORTHOPEDICS UNIT		
Dr. Kalpan Desai	Dr. Nitin Goswami	Dr. Pragnesh Shah
Dr. Ashish Shah	Dr. Divyang Dave	Dr. Manish Mistry
Dr. Pulak Godiawala	Dr. Kamlesh Devmurari	Dr. Maulin Shah
Dr. Prakash Chauhan	Dr. Narayan Khandelwal	

ANESTHESIOLOGY DEPARTMENT		
Dr. Rohit Parekh	Dr. Mansi Shah	Dr. Mithun
Dr. Piyush Goswami	Dr. Bharat Oza	Dr. Bhargav Trivedi
Dr. Minesh Patel	Dr. Vishmay Thakkar	Dr. Mayur Bhavsar
Dr. Beena Parikh	Dr. J R Belani	Dr. Bhadresh Shah
Dr. Riddhi Vakil	Dr. Anand Shukla	Dr. Harshali Bhavsar
Dr. Khushbu Bhavsar	Dr. Narayan Khandelwal	

PLASTIC SURGERY UNIT		
Dr. Himanshu Vora	Dr. Ravi Kalola	Dr. Nileshkumar Patel

ENT UNIT		
Dr. Prakash Bhatt	Dr. Gati Shah	Mr. Sanket Mehta

SPINE UNIT	
Dr. Amit Jhala Spine Surgeon	Dr. Dhruv Patel Minimally Invasive Spine Surgeon

CEREBRAL PALSY AND AUTISM UNIT	
Dr. S. R. Apte Occupational Therapist	Dr. Harshruti Shah Neuro Physician
Dr. Nitish Vora Neuro Physician	Dr. Anand Ayar Neuro Physician
Dr. Harsh Patel Neuro Physician	Dr. Prakash Chauhan Ped. Orthopedic Surgeon
Dr. Darshna Vora Autism Specialist	Dr. Prathana Kharod (Patel) Developmental Delay Specialist

CENTER FOR DIABETES	
Dr. J. C. Mehta Physician	Dr. Bharat Mehta Physician
Dr. Navin Patel Foot Surgeon	Dr. Shubha Desai Physician

JUVENILE DIABETES CLINIC	
Dr. Shalmi Mehta Endocrinologist	Dr. Ruchi Shah Endocrinologist
Dr. Dharmendra Panchal Endocrinologist	Dr. Rutul Goklani Endocrinologist

MULTI-SPECIALTY UNIT		
Dr. Apoorva Patel General Surgeon	Dr. Rupen Panchal Nephrologist	Dr. Sudhir Chandana Ped General Surgeon
Dr. Praveen Sarda Upper Extremity Surgeon	Dr. Laxman Malodiya Dermatologist	Dr. Keyur Shah Dermatologist
Dr. Aashka Shah Endocrinologist	Dr. Khushboo Shah Pulmonologist	Dr. Dhruvil Shah Neurologist
Dr. Rutween Shah Nephrologist		

WOMEN WELLNESS CLINIC UNIT	
Dr. Anila Kapadia Onco Gynecologist	Dr. Kshama Shah Gynecologist
Dr. Shakuntala Shah Onco Surgeon	Dr. Shefali Desai Breast Cancer Surgeon

PAIN CLINIC UNIT	
Dr. Divya Chokshi	Dr. Meeta Joshi
Dr. Chandni Patel	Dr. Monika Sharma

DENTAL UNIT	
Dr. Jeet Naik Periodontist	Dr. Arpit Halani Prosthodontist
Dr. Rahul Bachvani Orthodontist	Dr. Pratik Shah Oral Surgeon
Dr. Harshil Zaveri Periodontist	Dr. Shachi Shah Dental
Dr. Riddhi Agrawal Dental	

PATHOLOGY UNIT	
Dr. Biren Shah	Dr. Sejal Mehta

RADIOLOGY UNIT	
Dr. Trupti Patel	Dr. Dhiren Shah

MUSCULAR DYSTROPHY UNIT	
Dr. Ramesh Shah Physician	

PEDIATRIC UNIT	
Dr. Udayan Patel	

FULL TIME CONSULTANTS		
Dr. Anshul Sahu Pediatric Ortho Surgeon	Dr. Gati Shah ENT Surgeon	Dr. Yashvi Nathwani Patel Eye Surgeon



## OUR ESTEEMED DONORS 2022-23

Sr. No	Name of Donor	Total
1	RADHA MOHAN MEHROTRA MEDICAL RELIEF TRUST	50,00,000
2	M/S. JEWELX INDIA PVT LTD	50,00,000
3	M/S. CREST DATA SYSTEMS PVT LTD	33,68,095
4	M/S. KRISHNONICS LIMITED	25,00,000
5	LATE RANCHHODBHAI S PATEL AND LATE SMT. HARIBEN R PATEL CHARITABLE TRUST	25,00,000
6	SANTOSHDEVI AND BHAWARIBEN RAMESHWARJI AGRAWAL CHARITABLE INSTITUTE	25,00,000
7	M/S. RATNAMANI MATELS & TUBES LTD	24,55,155
8	M/S. UNISON PHARMACEUTICALS PVT LTD	17,00,000
9	HEART FOUNDATION AND RESEARCH INSTITUTE	15,00,000
10	LALJI MEHROTRA FOUNDATION	15,00,000
11	RAAJRATNA FOUNDATION	15,00,000
12	DR. KEYUR H PARIKH	11,00,000
13	M/S. SHILP GRAVURES LIMITED	10,00,000
14	SUPRIYA RAJIV DALAL	10,00,000
15	THE AHMEDABAD MERCANTILE CO. OP. BANK LTD	10,00,000
16	KISHORBHAI BHANABHAI MISTRY	8,85,082
17	M/S. INVENTIA HEALTHCARE LIMITED	7,80,000
18	DINESH KANTILAL CHARITABLE TRUST	7,00,000
19	M/S. RATNAMANI TECHNO CASTS PRIVATE LTD	6,83,101
20	M/S. MAZDA LIMITED	6,25,000
21	ANJANEYA CHARITABLE TRUST	5,17,500
22	PRAKASHBHAI HEMENDRABHAI SHAH	5,00,000
23	SHAH MADANMOHAN RAMANLAL HUF	5,00,000
24	GUJART VAISHYA SABHA	5,00,000
25	SNEHAL MUKUND MEHTA	5,00,000
26	DINA HEMALBHAI PATEL	4,00,000
27	JYOTSNABEN RATHOD	4,00,000
28	M/S. SHITAL INDUSTRIES PVT LTD	4,00,000
29	DR. SURESHBHAI D BHATT CHARITABLE TRUST	3,00,000
30	U V PATEL FOUNDATION	3,00,000
31	M/S. HITECH PROJECTS PVT LTD	2,50,000
32	M/S. SACHIN INDUSTRIES LTD	2,50,000
33	MANAV JYOT PUBLIC CHARITABLE TRUST	2,00,000
34	NAVNEET FOUNDATION	2,00,000

35	PANKAJ PRAVINCHANDRA SHAH	2,00,000
36	M/S. PARKER MULTI COMMODITIES (INDIA) PVT LTD	2,00,000
37	PRAKASHCHANDRA BALUBHAI BHATT	2,00,000
38	M/S. PRAWEEEN GULATI INFRASTRUCTURE PVT LTD	2,00,000
39	GUJARAT SARVAR MANDAL	1,50,000
40	VARSHA R CHHAYA	1,25,000
41	AHMEDABAD SARVAR MANDAL	1,20,000
42	AMOL PRAKASH BHAGWATI	1,00,000
43	BHANUPRASAD GOVINDBHAI PATEL CHARITABLE TRUST	1,00,000
44	BHARTI SHANTILAL DAFTARI	1,00,000
45	CHANDRAVADAN S SHAH	1,00,000
46	M/S. GODIAWALA ENTERPRISE	1,00,000
47	JAYSHREE YOGESH PARIKH	1,00,000
48	MALTI MANILAL SHAH	1,00,000
49	NIMESH RAJNIKANT SHAH	1,00,000
50	NUTAN NAGRIK SAHKARI BANK LTD	1,00,000
51	M/S. PARIKH ENTERPRISE PVT LTD	1,00,000
52	M/S. PAVAN ASSOCIATES	1,00,000
53	PRAFUL KACHRABHAI SHAH	1,00,000
54	R S PATEL CHARITY	1,00,000
55	RAHUL BABUBHAI PATEL	1,00,000
56	RASHMIKANT JAMNADAS SHAH	1,00,000
57	ROTARY CLUB OF COSMOPOLITON AHMEDABAD FOUNDATION	1,00,000
58	SHILPA NIMESH PATEL	1,00,000
59	SURENDRA VADILAL SHAH	1,00,000
60	VARSHA JITENDRAKUMAR PARIKH	1,00,000
61	YOGESHBHAI BALKRISHNA PARIKH	1,00,000
62	YOGESHBHAI BALKRISHNA PARIKH - HUF	1,00,000
63	HIRABEN DAHYABHAI DESAI PUBLIC CHARITABLE TRUST	80,000
64	DR. PRAKASH V AMIN	70,000
65	RAMILA CHIMANLAL SALVI	70,000
66	JAGAT JAYANTILAL KINKHABWALA	60,000
67	M/S. KEMI IMPEX PVT LTD	60,000
68	CHANDRIKABEN KANUBHAI THAKKAR	55,000
69	SAMIR SURESHCHANDRA SHAH	55,000
70	M/S. AKSHAR CONSTRUCTION	51,000
71	INAXI PRADIPBHAI PATEL	51,000
72	KALPAN DESAI HUF	51,000

73	NIPAM R SHAH	51,000
74	DHRUVIN PATEL	50,001
75	AHMEDABAD FOUNDRY MERCHANT ASSOCIATION TRUST	50,000
76	ANADINATH BANERJEE	50,000
77	ARVIND DOSHI	50,000
78	ASHOK GOVINDLAL SHAH	50,000
79	GAUTAM SHANTILAL SHAH	50,000
80	GIRISH SHANTILAL NANAVATY HUF	50,000
81	GIRISH V JOSHIPURA	50,000
82	JAYESH HARIYANI	50,000
83	JITENDRA ISHWARLAL SHAH	50,000
84	KAUSHALI INTERNATIONAL	50,000
85	KOSHAL AND MALHOTRA EDUCATION FOUNDATION	50,000
86	LATE JETHALAL AMRITLAL ESTATE TRUST	50,000
87	MANISH CHANDRAKANT HUF	50,000
88	NATIONAL CENTRE FOR QUALITY CALIBRATION	50,000
89	USHABEN BANSILAL SHAH	50,000
90	VAISHALI ASHUTOSH ANJARIA	50,000
91	DHIREN GORDHANDAS GANJWALA	45,000
92	INDIAN MUSCULAR DYSTROPHY SOCIETY	40,000
93	NANDINI HARIKRISHNA KACHHY	35,000
94	NAYANBHAI ARVINDBHAI NANAVATI	35,000
95	CHINUBHAI SHANTILAL SHAH CHARITABLE TRUST	30,000
96	ZALAK KAUSHAL SHAH	30,000
97	PRACHI HEMANTKUMAR PANDYA	28,600
98	DR. GOPAL H PATEL	25,000
99	DR. KAMAL CHANDRAVADAN SHAH	25,000
100	GIRIRAJ CHARITABLE TRUST	25,000
101	HEMAL ANANT KANUGA	25,000
102	JAGRUTI N SHAH	25,000
103	JYOTINDRA PRABHAKAR PANDIT	25,000
104	KANHAI S JHAVERI	25,000
105	PALLAVI J SHAH	25,000
106	DR. JYOTINDRA P. PANDIT	25,000
107	VINOD R MEHTA	25,000
108	SHRINIWAS MADHUSUDAN ANERAO	25,000
109	SMT SAVITABEN RASIKLAL TRUST FUND	25,000
110	VAMA NEHAL SHAH	25,000
111	VEENA ANILBHAI PUBLIC CHARITABLE TRUST	25,000



112	BHARAT CHAMANLAL BHAGAT	22,000
113	BHARAT H MEHTA	21,000
114	MANAN SARVAGNA GODIAWALA	21,000
115	M/S. PARIKH ENGINEERING CORPORATION	21,000
116	ROTARY CLUB OF AADARSH AHMEDABAD	21,000
117	SHILPA J MEHTA FOUNDATION	21,000
118	HARIBHAKTI CHARITABLE TRUST	20,000
119	SURESH RATILAL CHALISHAZAR	20,000
120	USHABEN HASMUKHBHAI SHAH	20,000
121	VADILAL BHOGILAL SHAH CHARITABLE TRUST	20,000
122	ARVIND RANCHHODBHAI PATEL	15,000
123	BHARAT P MODI	15,000
124	JAYA VINODBHAI PATEL	15,000
125	KIRIT HIRALAL SHAH HUF	15,000
126	MANHARLAL AMBALAL SHAH	15,000
127	ASIT R SHAH	11,000
128	HIREN JASHVANTLAL SHAH	11,000
129	DINESHCHANDR PRANLAL GANDHI	11,000
130	LATE SAROJBEN LAXMIDAS MEHTA TRUST	11,000
131	M/S. A K ALLOYS	10,000
132	HARIKRUPA ORTHOPEDIC AND ACCIDENT HOSPITAL	10,000
133	HARSHADKUMAR MAGANLAL PATEL	10,000
134	HITKAR CHARITABLE TRUST	10,000
135	KUNJBALABEN PRABODCHANDRA KOTHARI	10,000
136	MINAL ANJAN DALAL	10,000
137	NIMESH H PARIKH	10,000
138	M/S. REGUIUS MARKETING PVT LTD	10,000
139	SAHYOG PUBLIC CHARITABLE TRUST	10,000
140	SUVINA D MASHRUWALA	10,000
141	YOGESH RASIKLAL PARIKH	10,000
142	CHHAYA SANJAY SHAH	8,000
143	SNEHA RAMESH DOSHI	7,200
144	DIVYANG SURESHCHANDRA PANDYA	6,000
145	ASHWIN N SHAH	5,001
146	GATORBHAI R DABHI	5,001
147	VAIBHAV JAGDISHCHANDRA PATEL	5,001
148	ASHWINKUMAR NANUBHAI TRIVEDI	5,000
149	BALVANTRAY G DESAI	5,000
150	BHAILAL DALPATRAM MISTRY	5,000

151	CHANDRAKANT LAXMANBHAI DUDHIYA - HUF	5,000
152	NIREN HASMUKHBHAI SHAH	5,000
153	PRIYESH D SHAH	5,000
154	DR. (MRS) MRUDULA LALA	3,000
155	DR. BHARAT M SHAH	2,500
156	SADHANA R SHAH	2,500
157	SHRI PANCHKUVA KAPAD MAHAJAN D D TRUST	2,500
158	RISHABH RAMESH DOSHI	2,100
159	JASHVANTLAL RAMANLAL PARIKH	2,000

## DONORS – SUPPORT BY KIND

ASSOCIATION OF 41 CLUBS OF INDIA
SHARDABEN CHIMANBHAI CHARITABLE TRUST C/O SHRI ANANG LALBHAI
ROTARY CLUB AHMEDABAD METRO
RATNAMANI METALS & TUBES
RMMMRT
SHRI PRAFUL SHAH
ASHOK DAMANI
ASHOKBHAI G SHAH
NATIONAL HEALTH MISSION, GUJARAT
AHMEDABAD MUNICIPAL CORPORATION
SHRI CHANDRAKANT SHAREDALAL & JAYESHBHAI SHAREDALAL
SHRI SHAILESHBHAI DALAL AND SHRI HARSHILBHAI DALAL - DALAL ASSOCIATES
C. S. SAMARIYA RED CROSS INTERNATIONAL EYE BANK AHMEDABAD
NATIONAL PROGRAMME FOR CONTROL OF BLINDNESS & VISUAL IMPAIRMENT
NATIONAL TRUST
SHRI BHAVESHBHAI PATEL - M/S. AMANTA HEALTH CARE LIMITED
SHRI MALAYBHAI MULTANI - M/S PARSHWA INFRAVENTURES
SMT. BINABEN MANOJBHAI SHAH - CREST DATA SYSTEMS PVT LTD

## OUR ESTEEMED DONORS – OVERSEAS

INDIANS FOR COLLECTIVE ACTION		1392 USD
SPINAL CARE FOUNDATION		8000 GBP
ARPAN FOUNDATION	USD	11587.5 USD
<i>Girish Shah TTE</i>	500.00	
<i>Lotus Life Foundation</i>	5,000.00	
<i>M P Narayanan</i>	97.00	
<i>Sanjay Mokashi</i>	101.00	
<i>Bettadapur Consulting</i>	100.00	
<i>Ravi Mallu</i>	240.00	
<i>Nikunj Sheth</i>	48.50	
<i>TD Ameritrade Clearing</i>	5,000.00	
<i>Jatin Gajarawala</i>	501.00	
<i>Kiritbhai Shah</i>		
<i>Dr. Satish Bhatt</i>		

Thanks to our International Resource Committee president Mr. Kirit Shah for donating himself and collecting donation from other well wishers in USA





	OPD SCHEDULE		
DEPARTMENT	SPECIALITY	DAYS	
OPHTHALMOLOGY	GENERAL EYE	DAILY	MORNING – 9am TO 11 am
	DIABETIC RETINOPATHY	TUE - FRI	Afternoon 1 Pm
	GLAUCOMA	MON	Afternoon 1 pm
	CORNEA GRAFTING	THU	Afternoon 12 pm
	PEDIATRIC EYE CHECKUP	SAT	Afternoon 12 pm
	ORBIT AND OCULOPLASTY	WED	Afternoon 2 pm
	RETINOPATHY OF PREMATURITY	TUE	Afternoon 1 pm
CONGINITAL BIRTH DEFECT	CLUBFOOT	MON	Afternoon 2 pm
	LOWER LIMB DEFORMITIES	MON / WED / FRI	Afternoon 2 pm
	CLEFT LIP AND PALATE	THU	Morning 11: 30 am
	ENT	DAILY	9 :30 TO 5:30 PM
	CONGINITAL HEARING LOSS	MON / WED / FRI	Afternoon 2 pm
	SPEECH ASSESSMET	TUE / THU	Afternoon 2 pm
	SCOLIOSIS	TUE	Afternoon 12 pm
CEREBRAL PALSY / AUTISM / MENTAL RETIDRATION	GENERAL ORTHOPEDIC	DAILY	Morning 10 to 1 pm & Afternoon 2 to 4 pm
	CEREBRAL PALSY	1ST, 2ND. 3RD FRIDAY	Morning 9 am
	PEDIATRIC PSYCHOLOGICAL ASSESMENT	DAILY	10 AM TO 5 PM
	PEDIATRIC ORTHOPEDIC	MON, WED, FRI,	Mon & wed - 2 pm Friday – 12 pm
	DEVELOPMENTAL ASSESSMENT	THU	Morning 10 am
	EEG / EMG	SAT	Morning 10 am
	AUTISM	WED	Afternoon 2 pm
CENTER OF DIABETES	M.D PEDIATRICIAN PHYSICIAN	Tues / Thursday/ sat	Morning 10 am
	DIABETES CHECKUP	DAILY	9:30 to 1 pm
	DIABETIC FOOT	FRI	Morning 10 am
MULTI SPECIALITY CLINIC	JUVENILE DIABETES	SAT	Morning 10 am
	GASTROENTEROLOGY	Saturday	Afternoon 3 pm
	ENDOCRINOLOGY	Saturday	Afternoon 3 pm
	PULMONOLOGY	THUS	Afternoon 3 pm
	GENERAL SURGEON	MON	Morning 9:30am
	PEDIATRIC GENERAL SURGEON	TUE	Morning 11:30 am
	DERMETOLOGY	TUE, THU, MON, FRI	Mon & Fri – 9 am to 10 am Tue & Thu– 10 am to 12 pm
	UPPER EXTRIMITY	TUE	Afternoon 3 pm
	SONOGRAPHY	MON - FRI	Morning 10 am to 12 pm
	NEUROLOGY	THU	Evening 4 pm
	NEPHROLOGY	WED / SATU	Morning 9 am
	MEMOGRAPHY	MON, WED, FRI	Morning 10:00 am to 12 pm
OTHER UNIT	DENTAL	Monday to Saturday	Daily 9 am to 5 pm
	PAIN MANAGEMENT CLINIC	MON / TUE / FRI	Morning 10 am & Afternoon 12 pm
	PATHOLOGY LABORATARY UNIT	Monday to Saturday	Daily 8:30 to 5 pm
	RADIOLOGY	Monday to Saturday	Daily 9:30 to 5 :30 pm
	PHYSIOTHERAPY	Monday to Saturday	Daily 9 am to 6 pm
	HEALTH CHECKUP	Monday to Saturday	Morning 8:30 am
	MUSCULAR DYSTROPHY	SAT	12 pm to 3 pm
	CALIPER AND ARTIFICIAL LIMB	Monday to Saturday	10 am to 6 pm
	VACCINATION	Monday to Saturday	10 am
	GENERIC MEDICAL STORE	Monday to Saturday	9:30 am to 5:30 pm
	CMTC	Monday to Saturday	10 am to 5 pm
	SENIOR CITIZEN WELLNESS CENTER	MON-FRI	2 pm to 6 pm
	MD PHYSICIAN	TUE / THU / SAT	Afternoon 3:30 pm
	GENERAL PRACTICINER	Monday to Saturday	10 am to 12 pm
OPD REMAIN CLOSED ON SUNDAY			

## YOU CAN DONATE TO HEALTH & CARE FOUNDATION

### With IT Exemption

Corpus / 80G

Corpus / 80G Provisional Approval Number - AAATP1480HF20214

Bank Name - BANK OF INDIA

Bank Account No - 204710110002409

Bank Address - Deep Shanti, 1st Floor, Anjali Cross Road,  
Paldi, Ahmedabad, Gujarat 380007

IFSC Code - BKID0002047 • MICR Code - 380013064

### Without Exemption

Bank Name - THE KALUPUR COMMERCIAL CO-OPERATIVE BANK LTD

Bank Account No - 02010114196

Bank Address - Near Ratnasagar Flat, Kesariyaji Cross Road,  
Jivrajmehta Hospital Road, Vasna,  
Ahmedabad - 380 007

IFSC Code - KCCB0VSN020 • MICR Code - 380126019

### FOR CSR

CSR00005410

Name: Health and Care Foundation

Bank Name - THE KALUPUR COMMERCIAL CO-OPERATIVE BANK LTD

Bank Account No - 02010116628

Bank Address - Near Ratnasagar Flat, Kesariyaji Cross Road, Jivrajmehta Hospital Road,  
Vasna, Ahmedabad - 380 007

IFSC Code - KCCB0VSN020 • MICR Code - 380126019

### FCRA Detail

HEALTH AND CARE FOUNDATION

FCRA Certificate No. 041910250

Bank Name - STATE BANK OF INDIA

Bank Account No - 40096251727

Bank Address - FCRA cell, 4th Floor, State Bank of India,  
New Delhi Main Branch, 11, Sansad Marg, New Delhi - 110001

FSC Code - SBIN0000691 • MICR Code - SBININBB104

OR

### You Can Donate To Health & Care Foundation Through Arpan Foundation, California, USA

ARPAN FOUNDATION

Address : 556N, DIAMOND BAR BLVD, STE. 201-B, DIAMOND BAR, CA 91765

Contact : +310 707 1151

Contact Person : SHRI PARAGBHAI - + 310 707 1151

Email ID : [parag@arpanfoundation.org](mailto:parag@arpanfoundation.org)

MR. KIRIT SHAH - +15108614080

Email ID : [kiritshah@yahoo.com](mailto:kiritshah@yahoo.com)

Website : <https://arpanfoundation.org>

Donation in USA is tax deductible under 501(C) 3 Tax ID #20-5593243



You can join with us [www.healthandcarefoundation.com](http://www.healthandcarefoundation.com)



## HEALTH AND CARE FOUNDATION

**Indukaka Ipcowala Seva Sansthan**

Nr. Malav Talav, Before Rajwadu Hotel, Jivraj Park, Ahmedabad – 380 051 Gujarat (India)

Phone No: 079 – 266 10802, 266 13800 Mob: - 9909942835

Email: [healthandcarefoundation@gmail.com](mailto:healthandcarefoundation@gmail.com) Web: [www.healthandcarefoundation.com](http://www.healthandcarefoundation.com)